

# EVD SERIES

## VACUUM DRAIN

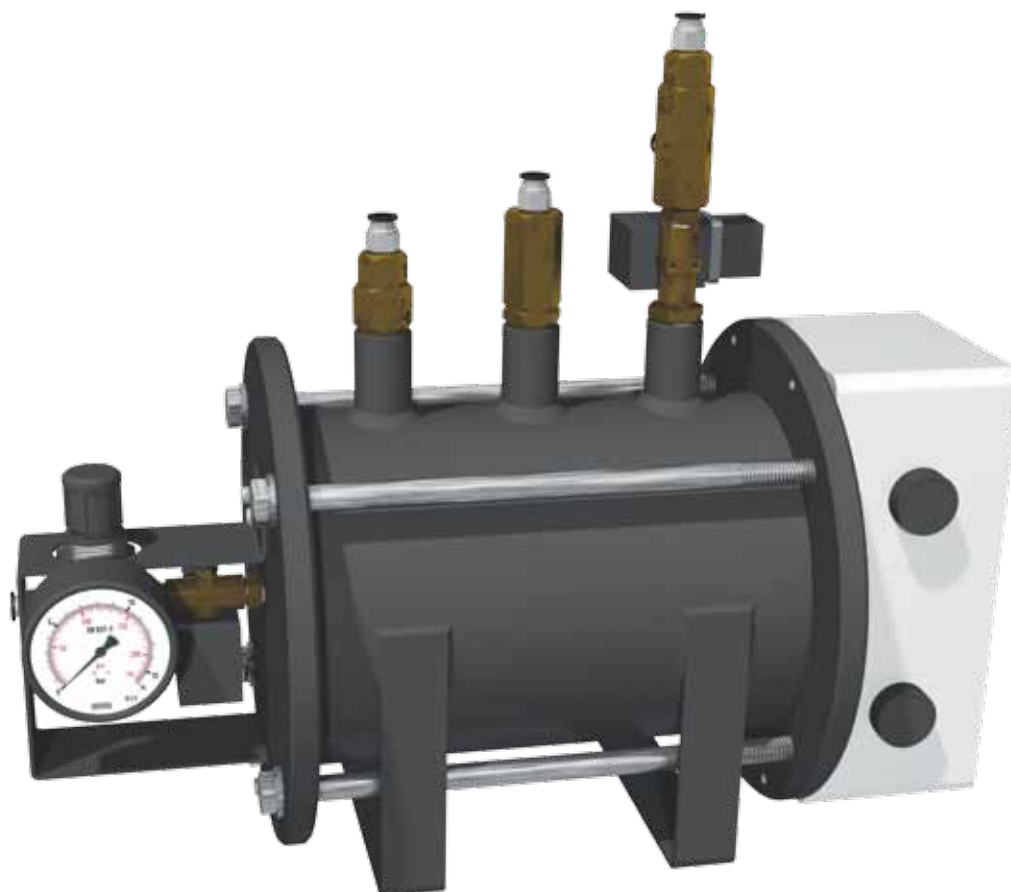


**20-2000 mbar(abs)**  
operating pressure

**1,5 to 65 °C**  
operating temperature range

**1/2"**  
inlet/outlet connections

**Ø8"**  
compressed air supply



## DESCRIPTION

EVD has been developed for fully automatic discharging of condensate or any other non-aggressive fluid from vacuum system. The unit can be installed as external drain on any application specified below. Condensate accumulates in the aluminium reservoir and when the level is high enough condensate is being discharged from the system by the compressed air.

TECHNICAL DATA		EVD
Operating temp. range		1,5 - 65 °C (35-149 °F)
Operating pressure		20 - 2000 mbar(abs) / (0,29 - 29 psi)
Inlet connection		G 1/2"
Outlet connection		G 1/2"
Compressed air supply		Push connection for tube ø8
Air vent connection		Push connection for tube ø8
Electric power connection		230 Vac
Dimensions	A	465 mm
	B	240 mm
	C	390 mm
Medium		Condensate (air, water, oil); Non aggressive
Material		Aluminium

## APPLICATIONS

- Vacuum systems

# **omega air**

## *Air and Gas Treatment*



OMEGA AIR d.o.o. Ljubljana

T +386 (0)1 200 68 00  
F +386 (0)1 200 68 50

[info@omega-air.si](mailto:info@omega-air.si)

Cesta Dolomitskega odreda 10  
SI-1000 Ljubljana, Slovenia  
[www.omega-air.si](http://www.omega-air.si)

Distribuidor Autorizado:



**megafilter**  
Filtros e sistemas de Filtragem

Rua Silvio Pinto Ribeiro, 1625  
Quississana, São José dos Pinhais - PR  
CEP: 83085-400

Fone: +55 41 3081 3050  
[vendas@megafilter.com.br](mailto:vendas@megafilter.com.br)

